

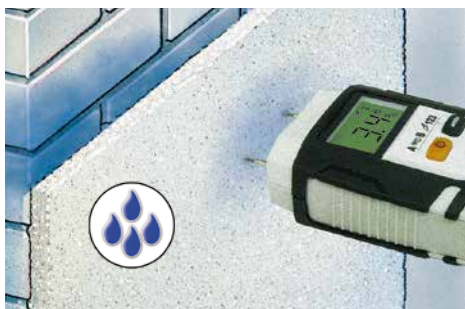
Laserliner

DampFinder Home



Universal device for testing moisture in wood and building materials

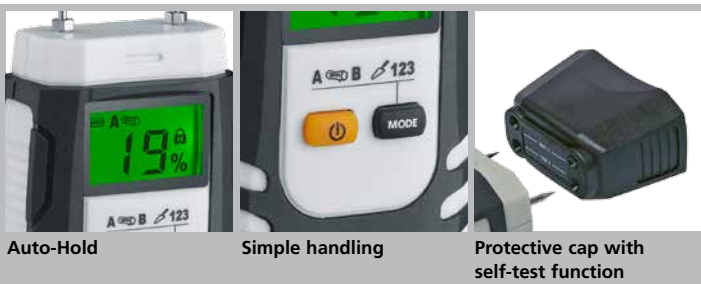
Rev18WZ6



- **Versatile measuring device:** For ascertaining moisture in building materials and for quick checks when working with wood
- **Simple handling:** Simply push the electrode spikes into the material.
- **Material groups:** selection of various wood and building materials enables material-specific measurements while increasing measuring accuracy.
- **Auto-Hold:** The most recent measured value is saved temporarily.
- **Sturdy, ergonomically designed rubberised casing:** The device can be comfortably held in one hand, meaning that the measuring spikes can be safely inserted.
- **Self-test function:** A reference measurement in the protective cap verifies the accuracy of the measuring device.
- **Removable protective cap** to protect the measuring spikes against damage during transport.
- **Auto power-off:** the device switches itself off automatically after 3 min. of inactivity.

TECHNICAL DATA

MATERIALS	
102 types of wood, cement screed, gypsum plaster, cellular concrete, test mode	
MEASUREMENT RANGE	
CEMENT SCREED	1%...4.5%
GYPHUM PLASTER	0.1%...38.2%
CELLULAR CONCRETE	2.2%...99%
WOOD	5%...99%
ACCURACY (ABSOLUTE)	
WOOD	± 1% (5%...30%)
	± 2% (<5% and >30%)
BUILDING MATERIALS	± 0.15% (0%...10%)
	± 1% (>10%)
OPERATING CONDITIONS	
0°C...40°C, Max. humidity 85% rH, no condensation, Max. working altitude 2000 m above sea level	
STORAGE CONDITIONS	
-10°C...50°C, Max. humidity 85% rH	
POWER SUPPLY	
1 x 6LR61, 9V	
WEIGHT (incl. battery)	
146 g	
DIMENSIONS (W x H x D)	
57 mm x 120 mm x 44 mm	



Auto-Hold

Simple handling

Protective cap with self-test function

ARTICLE	ARTICLE NO	EAN-CODE	PU
DampFinder Home	082.013A	4 021563 704477	5



DampFinder Home
+ battery (1 x 6LR61, 9V)
+ protective cap with self-test function
Packing dimension (W x H x D)
110 x 235 x xx mm

