

# Laserliner®

## PipeControl Mobile-Camera set

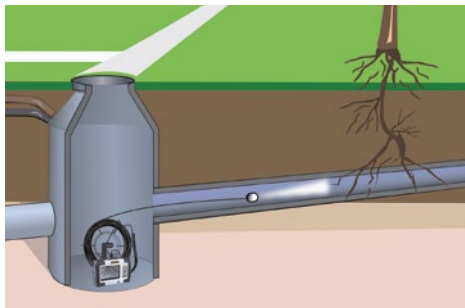


**20 m**  
DOF 5...60 cm



### Video inspection system with practical camera unit for mobile use

Rev1213



#### VideoControl-Master

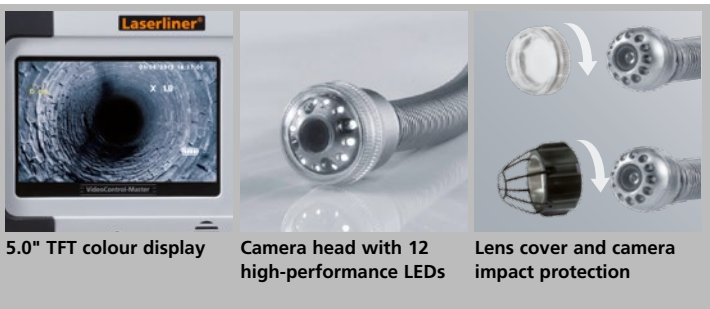
- Large, high resolution 5.0" colour display
- Integrated still image and video recording function with snapshot option for image documentation during video recording.
- Adjustable, digital zoom function with large and high resolution zoom range.
- Image rotation in 90° increments
- Image comparison function: Compares the current image with a reference image
- Data storage on SD card, max. 16 GB
- USB 2.0 port
- External monitors operated via TV Out connection
- Multilingual On-Screen-Display
- Interchangeable camera unit
- Li-ion battery for up to 4 hours of continuous operation
- Wireless-Ready: preset for cordless image transfer

#### PipeControlMobile-Camera

- 25 mm stainless steel camera head
- No pull-back thanks to flexible coil spring
- Powerful object lighting
- Sturdy, hand-held reel with 20 m cable
- SafetyLens / CameraProtector: Lens cover and camera impact protection
- BigTube-adaptor: Modular centring brush system

#### TECHNICAL DATA

<b>VIDEOCONTROL-MASTER</b>
SCREEN TYPE 5.0" TFT colour display
DISPLAY RESOLUTION 640 x 480 pixels
<b>CONNECTIONS</b>
Industrial connector for camera TV-Out, USB 2.0, SD card slot, 5V DC power pack
<b>WIRELESS RECEIVER</b>
ISM 2.4 GHz, Audio/Video
<b>FORMAT PICTURE / IMAGE RESOLUTION</b>
JPEG format, 640 x 480 pixels
<b>VIDEO FORMAT / IMAGE REFRESH RATE</b>
ASF / 30 frames / sec
<b>LED</b> 10 luminosity degrees
<b>ZOOM</b> 2 x digital zoom in 10% steps
<b>MEMORY</b> SD card, max. 16 GB
<b>AUTO SHUT OFF</b> 5 min / 10 min / 15 min / 30 min (adjustable)
<b>POWER SUPPLY</b>
Li-ion rechargeable battery / power pack
<b>OPERATING TIME</b> 4h
<b>OPERATING TEMPERATURE</b> -10 ... 60°C
<b>PIPEMOBILESTATION-CAMERA</b>
TYPE OF CAMERA CMOS image sensor
<b>CAMERA HEAD / CABLE</b> ø 25 mm, IP 68 (immersion depth 20 m, 1h)
<b>CAMERA RESOLUTION</b> 640 x 480 pixels
<b>FIELD OF VISION</b> 73°
<b>FOCAL DEPTH</b> 5 ... 60 cm
<b>CABLE LENGTH</b> 20 m
<b>REEL DIAMETER</b> 31 cm
<b>MINIMUM BENDING RADIUS</b> 70 mm
<b>OPERATING TEMPERATURE</b> -10 ... 60°C



5.0" TFT colour display

Camera head with 12 high-performance LEDs

Lens cover and camera impact protection

ARTICLE	ARTICLE NO.	EAN CODE	PU
PipeControlMobile-Camera set	084.121L	4 021563 688364	1

#### VIDEOCONTROL-MASTER



#### CAMERA



#### PipeMobileStation-Camera set

- + VideoControl-Master
- + PipeMobileStation-Camera
- + CameraProtector 25 mm
- + SafetyLens
- + USB-cabel
- + 2 GB SD-card
- + power supply/battery charger
- + AV-cabel
- + carrying strap

incl. Sortimo® L-BOXX® 238  
Packing dimension (W x H x D)  
442 x 253 x 357 mm